

**High Performance  
Insulation**



**celbar®**

***WALL SPRAY SYSTEMS***

**Improve Your Energy-  
Efficiency and Sound  
Control with Celbar®  
Wallspray Insulation.**

- Commercial
- Residential
- Superior Insulation
- Superior Sound Control



# Celbar®

Wall Spray Insulation

## Insulation is a Necessity

The insulation you select is an important decision. The comfort and maintenance of your home, the cost of your monthly heating/cooling bill, and many more factors are directly related to the performance of insulation.

## Keep Your Cool

Natural materials insulate better than man-made mineral fibers. Consider a wooden rod versus a glass rod over a heat source. The glass rod conducts heat readily, the wooden rod does not. Ordinary insulation is just a mass of small glass rods, and additional insulating power is lost when compressed, **celbar** is a natural insulator and retains its insulating ability.

## Unseen Performance

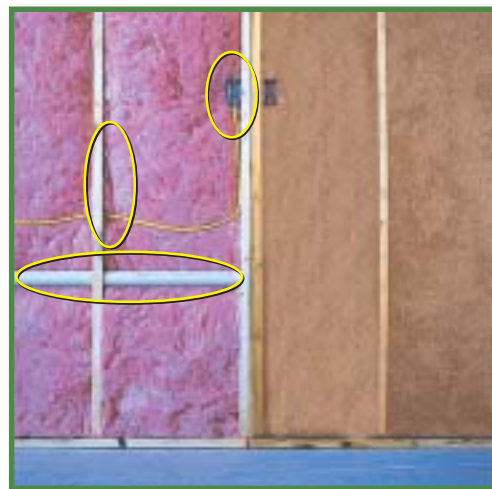
Even though you don't see it, the insulation in your home really affects you every day. **celbar** helps to maintain a comfortable home, reduce wear and tear on the air conditioning system, or even qualify for a larger mortgage.

## Kilowatts Saved



See back cover for R-Values

Celbar has always been formulated with 100% Borates & Borate additives and is free of all Ammonia additives!



*You choose ...*

*An insulation that simply takes up space, or an insulation that completely protects the wall?*

*Yellow ovals denote sources of air infiltration and poor detailing. Celbar's monolithic seal performs as much as 38% better\* than fiberglass.*



## Pay full price, receive half the benefit

According to Energy Design Update, poor detailing of ordinary insulation can cut the insulations in-place "R" -value to **half** of what is listed on the package. Because **celbar** is normally spray-applied to the full thickness of the stud, there is virtually no detailing deficiencies, giving you the full "R"-value.

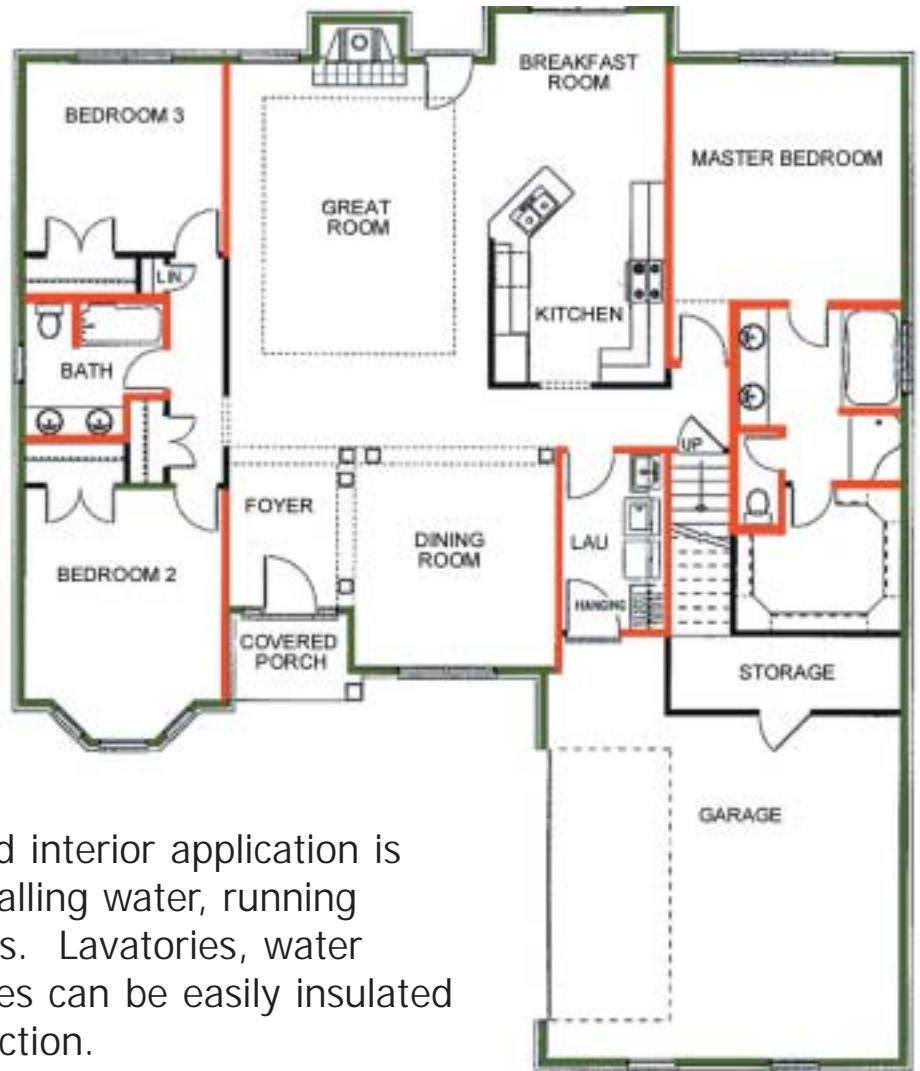
\* Results of a study conducted at the University of Colorado at Denver School of Architecture and Planning 1989-1990. For a copy of the Colorado Study contact International Cellulose or CIMA 136 S. Keowee St. Dayton, OH 45402

# Commonly overlooked areas that increase your home's **Sound & Acoustical** comfort

## Sleep Peacefully

With the popularity of home entertainment centers, surround sound speaker systems and other sound sources, interior noise pollution must be addressed. Applying **celbar** Wall Spray within interior walls greatly reduces the sound that moves through the wall providing a quieter, more comfortable room.

**celbar** has been installed in many of the most prestigious hotels throughout the world to control sound transmission.



## Avoid embarrassment

Another very commonly overlooked interior application is controlling sound transmission of falling water, running water or other embarrassing noises. Lavatories, water closets, utility rooms, plumbing lines can be easily insulated against noise during initial construction.

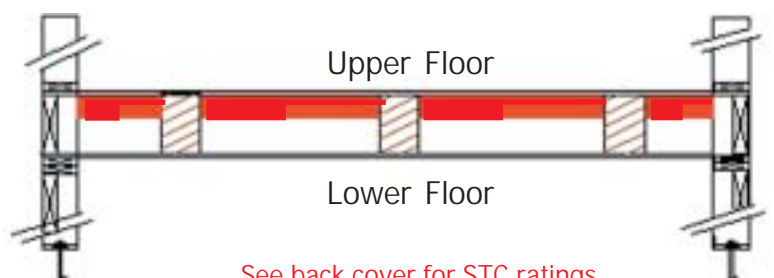
## Reduce noise between floors

**celbar** Wall Spray, applied between floors of multilevel dwellings helps reduce airborne noise such as voices, radios, televisions and other annoying sounds. In combination with resilient channels, **celbar** Wall Spray reduces the impact or foot-fall noises very common in today's homes.

**celbar** Exterior Walls



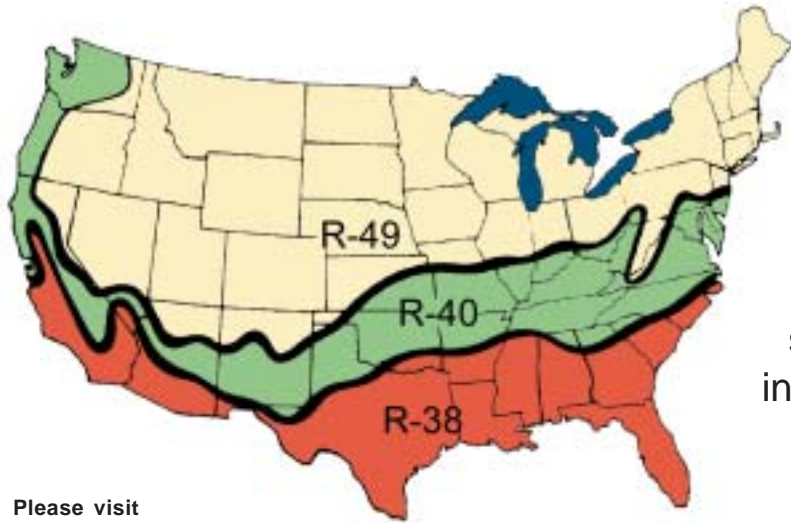
**celbar** Interior Soundwalls & Between Floors



*Insulate around bedrooms, bathrooms, utility rooms and inbetween floors*

See back cover for STC ratings

# Compliment Your Home's Thermal Efficiency with **celbar**® Loosefill Attic Insulation



Please visit [www.energy.gov](http://www.energy.gov) for your exact R-value recommendation

Studies show what we all know to be true, heating and cooling costs are a major component of the home's monthly utilities. Clearly this makes your insulation selection one of the most important energy investments you can make.

## Properly Insulate Your Home's Attic

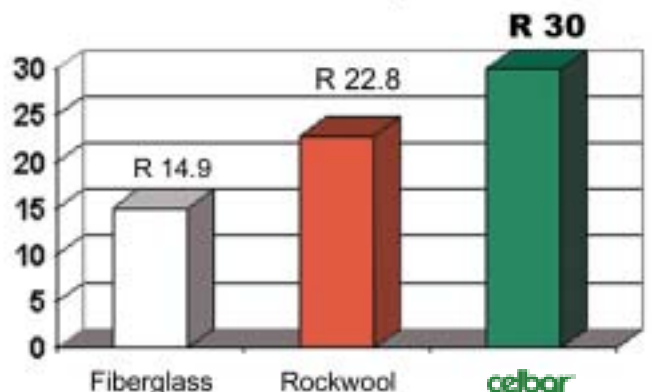
### Compare Insulation

Not all insulations provide the same amount of insulating power. At an equivalent thickness, "...low density fiberglass insulation always transmits heat faster than cellulose." **celbar** Loosefill is able to achieve an R-30 in only 8.3", ordinary fiberglass fails to achieve an R-15 at the same thickness. "The reason why low-density fiberglass has a lower R-value than cellulose is mostly because glass fibers do not block radiant heat as well as cellulose fibers<sup>1</sup>."

<sup>1</sup> Energy Design Update, May 1998

- Reduces Heating/Cooling Bills
- Resists Mold and Mildew
- Resists Insects
- Naturally Safe
- Doesn't Itch
- Reduces Noise
- Fire Resistant

Loosefill Insulation R-Value Comparison Chart @ 8 1/2"



Ask your insulation contractor for further information about **celbar** Loosefill Insulation



**STEP 1:** A unique spray application that fully insulates around plumbing, wiring, reducing air infiltration, and creating a comfortable home.

*Celweb* is used as backing material when drywall has not yet been installed.



**STEP 2:** Applied just beyond the studs ensuring maximum coverage, *celbar* is planed flat creating an even, complete thermal barrier.

### What about testing?

*celbar* meets applicable standards required by the Federal Government. *celbar* is listed by ICBO, Southern Building Code, Metro Dade, and City of Los Angeles. It also meets applicable HUD, FHA, VA requirements.

### Defeat Air Infiltration

*celbar* greatly reduces air infiltration, a major contributor to high energy costs. Roughly 30% of your heating & cooling costs are wasted due to air infiltration. With *celbar* every section of wall is custom fitted uniformly with insulation significantly lowering air infiltration.

### Protection is Key

*celbar* is treated exclusively with a unique borate compound which is a natural fungicide and provides internal protection against insects and rodents. As demonstrated by independent lab testing, *celbar* also possesses excellent resistance to fire. Many ordinary insulations offer no protection to these problems.

**Lower Utility Bills  
Reduce Noise  
Live in Comfort**



### Quiet Counts

The peacefulness of a house has a substantial effect on the comfort of your home. *celbar* has been installed in many luxury hotels such as the Embassy Suites, Marriott Hotels, and Wyndham Hotels to reduce room to room noise.



**Our website is open 24 Hrs. !!!**

**Or call (800) 444-1252**

**For your local Certified Applicator**

# Celbar®

## Wall Spray Insulation

07210 ICC  
Buy Line 3462

- Sound transmission control for partition walls and plumbing
- Thermal insulation
- Hourly rated partitions

CSI 09530

www.celbar.com

### SYSTEM DESCRIPTION

**celbar** is a blend of specially prepared cellulose fibers, organic in nature, treated with adhesive and fire resistant chemicals. When sprayed in place, the interlocking fibers result in a mass that produces excellent sound and thermal properties.

**celbar** is pneumatically spray-applied in wall and floor/ceiling cavities to form a monolithic coating. This process seals cracks and holes in the wallboard, around plumbing and electrical outlets, vent ducts and other irregularities. There are no compressed areas or voids to allow sound leaks, R-value reduction, or air infiltration.

### PERFORMANCE WHERE IT COUNTS

**celbar** provides superior sound transfer control demanded by building designers, owners and occupants. **celbar** assemblies perform closer to lab tested STC ratings in the field than do other conventional batt and sound board systems. This is due to the complete coverage and the sealing action of **celbar**. The performance of **celbar** compared to other identically constructed wall systems, as documented by laboratory tests is shown below.

#### 2 1/2" Metal Studs With 1/2" Gypsum Wallboard - both sides.

TEST	RESULT
A. No Sound Control material used	31 STC
B. 2 1/2" sound barrier batt	33 STC
C. 2 1/2" sound barrier batt and 1/2" cellutex board	37 STC
<b>D. 1 1/2" Celbar Spray</b>	<b>49 STC</b>

### PHYSICAL PROPERTIES

#### THERMAL PROPERTIES

<b>Thickness</b>	<b>1.0" 2.5" 3.5"</b>
<b>R-Value</b>	<b>3.8 9.5 13.3</b>

#### FIRE HAZARD CLASSIFICATION

Underwriters Laboratories;  
Reference #R-5499.

- ICBO-Approval Number 2262
  - Southern Building Code-Approval Number 9566
- LISTINGS** • HUD-FHA-VA-Permits the use of **celbar** in projects they finance-based on **celbar's** compliance with UMB-80

### ASTM E-119 FIRE RATING - ONE HOUR

**celbar** has been tested in accordance with ASTM E-119 including hose stream test and is accepted for use in hourly fire-rated wall assemblies.

Professionally Installed By:

### METAL STUD CONSTRUCTION

STC RATING

55

2 5/8" metal studs, 2 layers 5/8" gypsum board on one side, 1 layer 5/8" gypsum board on the opposite side: 2 1/2" **celbar Spray**.

53

3" metal studs, 1 layer 5/8" gypsum board on each side: 2" **celbar Spray**.

51

2 1/2" metal stud 24" O.C. faced both sides with 5/8" gypsum wallboard: 1 1/2" **celbar Spray**.

### WOOD STUD ASSEMBLIES

58

2"x4" stud on a 2"x6" plate spaced 16" O.C. and staggered on opposite sides, faced on both sides with 5/8" gypsum wallboard: 1 1/2" **celbar Spray**.

56

2"x4" stud 16" O.C. on two separate 2"x4" plates with 1" separation. Faced on one side with 5/8" gypsum wallboard and 1/2" gypsum wallboard other side: 1 1/2" **celbar Spray**.

51

2"x4" wood studs, 1 layer 5/8" gypsum board on each side: 3 1/2" **celbar Spray**.

50

2"x4" wood studs, 1 layer 5/8" gypsum board on each side: 2" **celbar Spray**.



#### Special Precautions

Celbar wall spray is applied with water and should not be sprayed on decorative wood paneling as it could cause warping. Celbar should not be used in areas where vinyl or foil wall covering or other vapor barriers are used on both sides of the wallboard, unless Celbar is allowed to dry completely before closing up the wall. *For further information on limitations and precautions request ICC Warning Bulletin SF-387*

